

RUBBER TRACKS

Product Guide





PURPOSE BUILT

Rubber tracks are built for NOVA using “Lean” manufacturing techniques and premium materials. Complete satisfaction guaranteed. NOVA Rubber tracks are available for all machine makes and models.

In comparison to steel tracks, rubber tracks are lighter, require less machine power, use less fuel, reduce noise and will not damage paved roads.





CORE STRUCTURE

Forged Metal Cores

The metal cores created from forged steel (not cast), guarantee solid performance of the metal core. Special adhesive treatment is used to firmly bond the metal core to the rubber. More weight doesn't mean a better rubber track. The weight most likely comes from very heavy-cast metal cores. The forgings we use, allow less overall weight and increase fuel economy.

Rubber Compound

Merging natural and synthetic rubber produce superior rubber tracks. Natural rubber compounds provide flexibility and strength. Whereas synthetic rubber adds reliability through thermal stability and resistance to oils. It's an ideal blend, that is good for its anti-abrasive properties as well as flexible weather capabilities.

Steel Cords

Our rubber tracks use continuous high-strength steel cords, making a robust structure. Special consideration is paid to both the machine and load weight, when calculating the number of steel cords in the core.

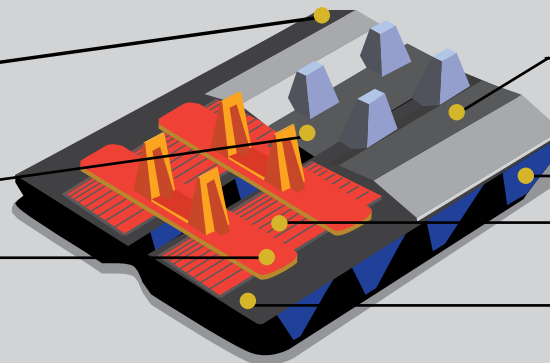


RUBBER TRACK STRUCTURE

Rubber Track Base

Opening for Sprocket Tooth

Forged Steel Core



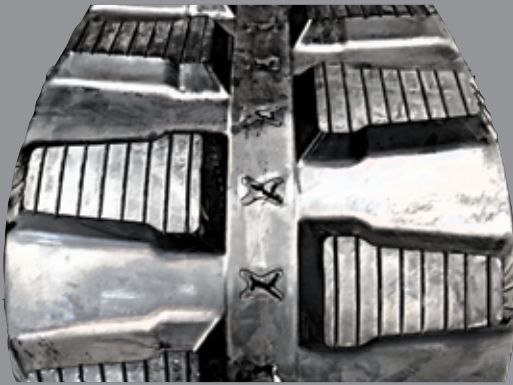
Metal Guide

Lug Profile

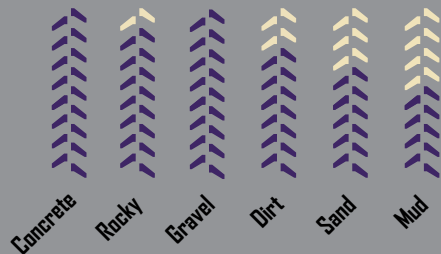
Steel Cord

Intermediate/Canvas

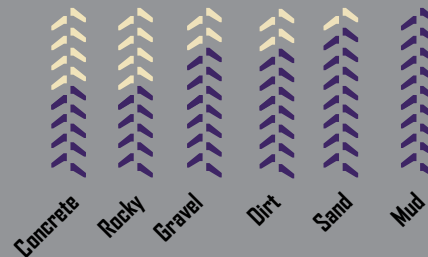
TREAD PROFILES



**Mini Excavator (EX)
MA Tread Profile**



**Mini Excavator (EX)
MB Tread Profile**



**Compact Track Loader (CTL)
BZ Tread Profile**



WARRANTY

WARRANTY

This warranty is to guarantee the quality of every NOVA rubber track sold. The warranty is valid for 24 months of service from invoice date and ensures the product to be free from defect in materials or workmanship for the duration stated below:

Skid Steer/Compact Track Loader:

Skid Steer/CTL rubber tracks are covered for a period of 24 months. The first 12 months are replacement warranty and the remaining 12 months are pro-rated.

Mini Excavator:

Mini Excavator rubber tracks are covered for a period of 24 months. The first 12 months are replacement warranty and the remaining 12 months are pro-rated.

NOVA Rubber tracks warranty excludes labour, transportation and improperly installed tracks.

If within the 24 months from original date of purchase the rubber track fails in service due to defect in material or workmanship, the

SIZING

RUBBER TRACK SIZE DEFINITION (Width x Pitch x Number of Links)

Example: **230 x 72 x 43**

Track width

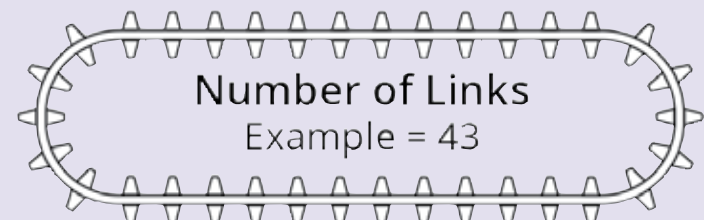
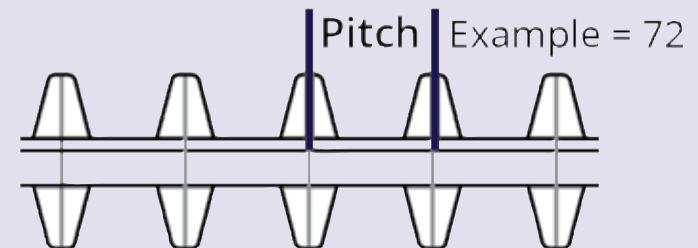
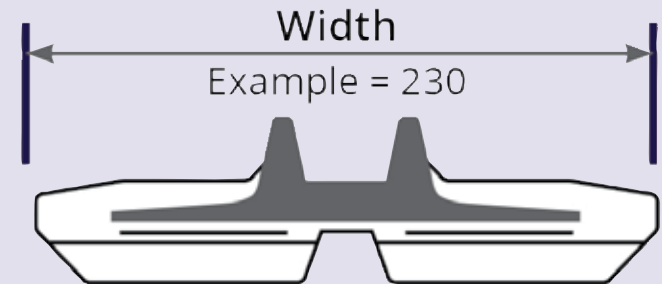
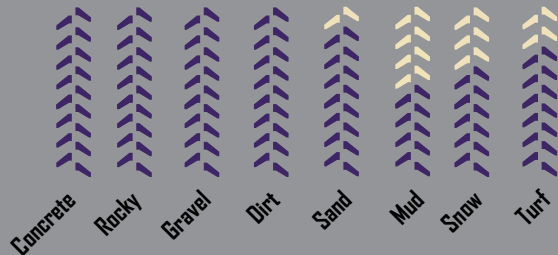
Pitch length

Number of links

“N” or “W” contained in the Mini Excavator sizing denotes “Narrow” or “Wide” guide widths.



**Compact Track Loader (CTL)
BL Tread Profile**



purchaser must contact QCC with the following information:

- Invoice documentation as validation of the warranty coverage date range.
- Part#
- Description of the defective part.
- Pictures of the defective part.

It is not necessary to send defective product back to QCC unless otherwise directed.



RUBBER TRACKS

For more information, contact the experts at:

1-888-507-9734
sales@qccanada.com

EAST 8 Caesar Ave.
Nepean ON, Canada, K2G 0B6

QCCANADA

WEST 2133 191 Street Unit #1
Surrey, BC, Canada, V3Z 3M3

