

CARBIDE TIPPED MULCHING TEETH



- Carbide-tipped mulching teeth are ideal for abrasive materials like sand and rocks.
- The teeth can be drum-mounted on a skid steer or excavator boom.
- Ideal for roadside clearing, removing invasive species, and site preparation.



GET-111530012-K



GET-112800063-K



GET-112800064-K



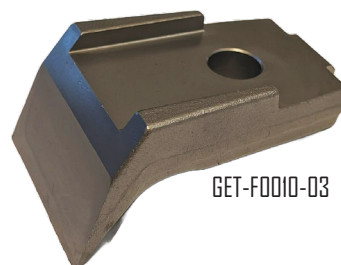
GET-112221000-K



GET-MSKGTI-09



GET-F0010-02



GET-F0010-03

QCCANADA

Contact our Sales team for more information
sales@qccanada.com or 1-888-507-9735